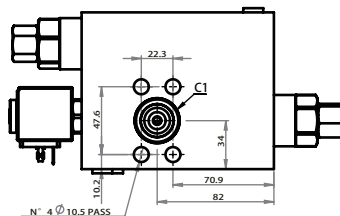
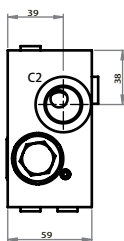
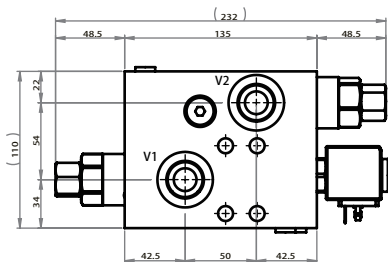
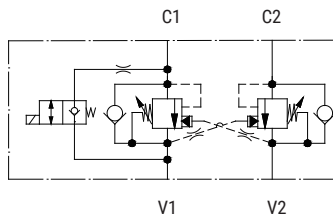


PG04-034

FLANGED MOUNTING SAE 3/4" 3000PSI

TECHNICAL DATA

Nominal flow	150L/min
Max. working pressure	350bar
Setting range	80-350bar
Setting pressure	350bar
Pilot ratio	4:1
Coil	DC24V±10%
Material	Alluminum



Ports	
V1/V2/C2	G 3/4"
C1	SAE 3/4" 3000psi
T	G 1/2"

Note:
Pressure setting must be 30% higher than pressure induced by the load.

ORDERING CODE

P G **0 3** - **0 3 4** - **N N**