

PRESSURE RELIEF VALVE

RV01.M20

CARTRIDGE TYPE

TECHNICAL DATA

Max. flow	30L/min
Max. working pressure	420bar
Setting pressure	See below table
Material	Zn/Fe - standard(96h)
Version	Poppet type-direct acting
Cavity	CL-M20
Installation torque	40-45Nm
Weight	0,145kg

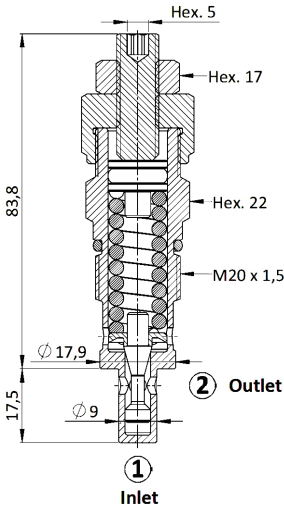
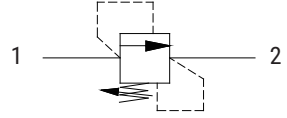
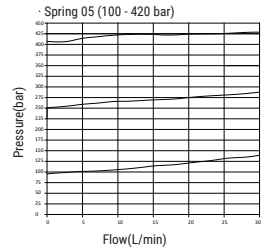
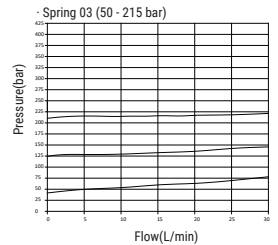
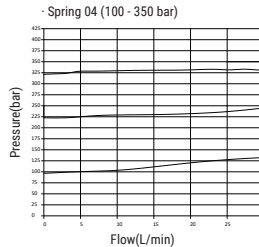
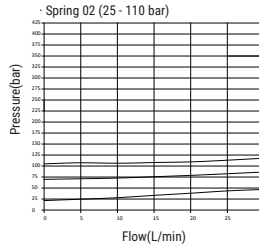
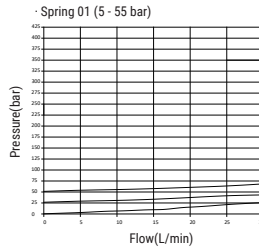


TABLE 1

Spring range (bar)	
01	5-55
02	25-110
03	50-215
04	100-350
05	100-420

* Recommended

p/Q performance



ORDERING CODE

RV . **01** . **M20** . **01** . **000**

Cavity
M20= metric
M20x1.5

Spring range
See table

Pressure Setting
000 - No specific
setting required