

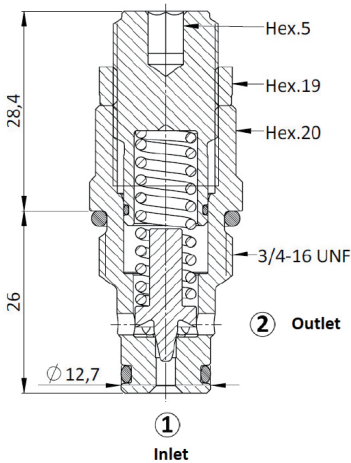
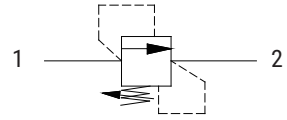
PRESSURE RELIEF VALVE

RV01.S08

CARTRIDGE TYPE

TECHNICAL DATA

Max. flow	25L/min
Max. working pressure	420bar
Setting pressure	See below table
Material	Zn/Fe - standard(96h)
Version	Poppet type-Direct acting
Cavity	SAE08
Installation torque	40-45Nm
Weight	0,100kg



p/Q performance

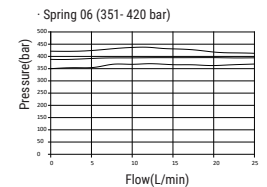
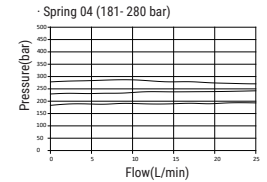
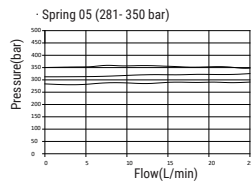
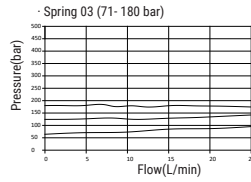
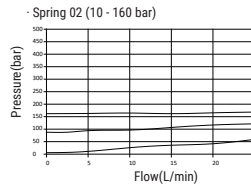
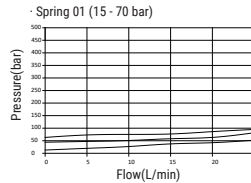


TABLE 1

Spring range (bar)	
· 01	15-70
· 02	10-160
· 03	71-180
· 04	181-280
· 05	281-350
· 06	351-420

· Recommended

ORDERING CODE



Cavity
S08= 3/4 16UNF

Spring range
See table

Pressure Setting
000 - No specific setting required