

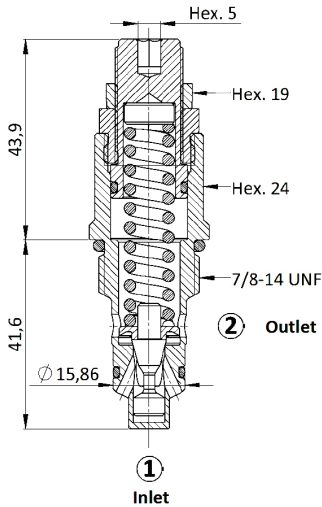
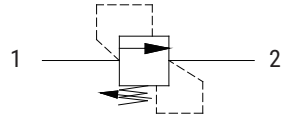
PRESSURE RELIEF VALVE

RV01.S10

CARTRIDGE TYPE

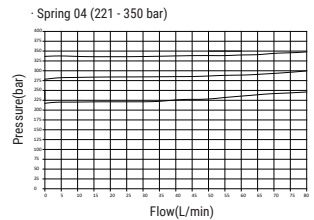
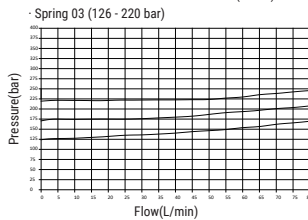
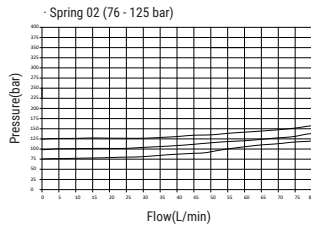
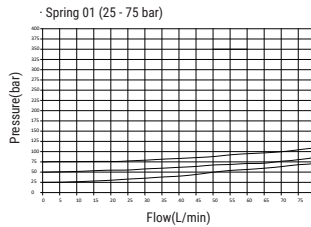
TECHNICAL DATA

Max. flow	80L/min
Max. working pressure	350bar
Setting pressure	See below table
Material	Zn/Fe - standard(96h)
Version	Poppet type-Direct acting
Cavity	SAE10-2
Installation torque	40-45Nm
Weight	0,170kg



p/Q performance

TABLE 1



Spring range (bar)	
01	25-75
02	76-125
03	126-220
04	221-350

- Recommended

ORDERING CODE



Cavity
S10= 7/8 - 14 UNF

Spring range
See table

Pressure Setting
000 - No specific setting required